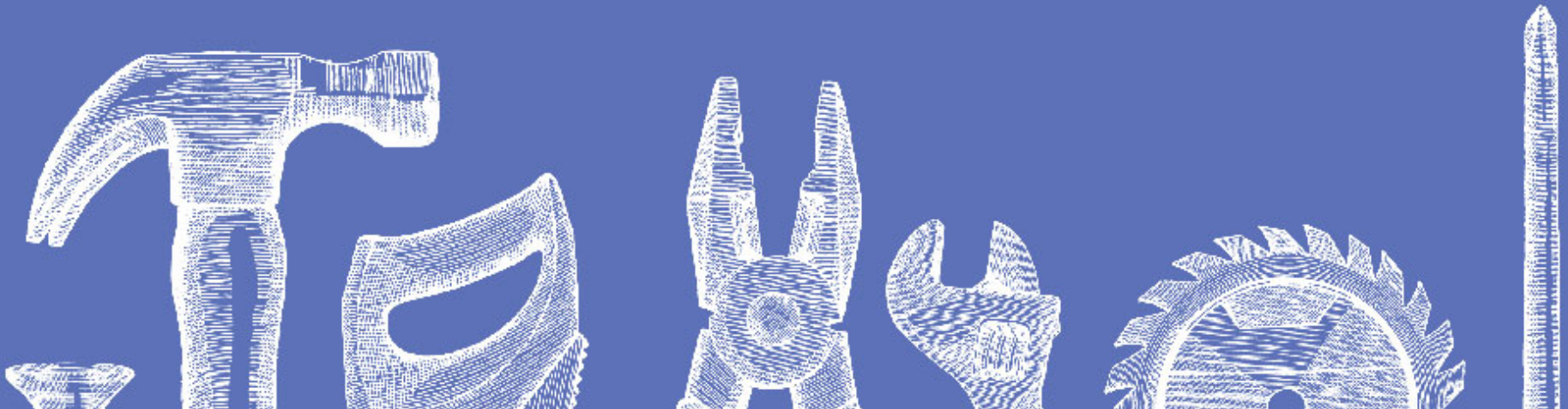


# **TMRS Retirement Toolkit**

Annual Training Seminar • October 7-9, 2012 • Sugar Land Marriott Town Square

## **TMRS – The Whole Picture**

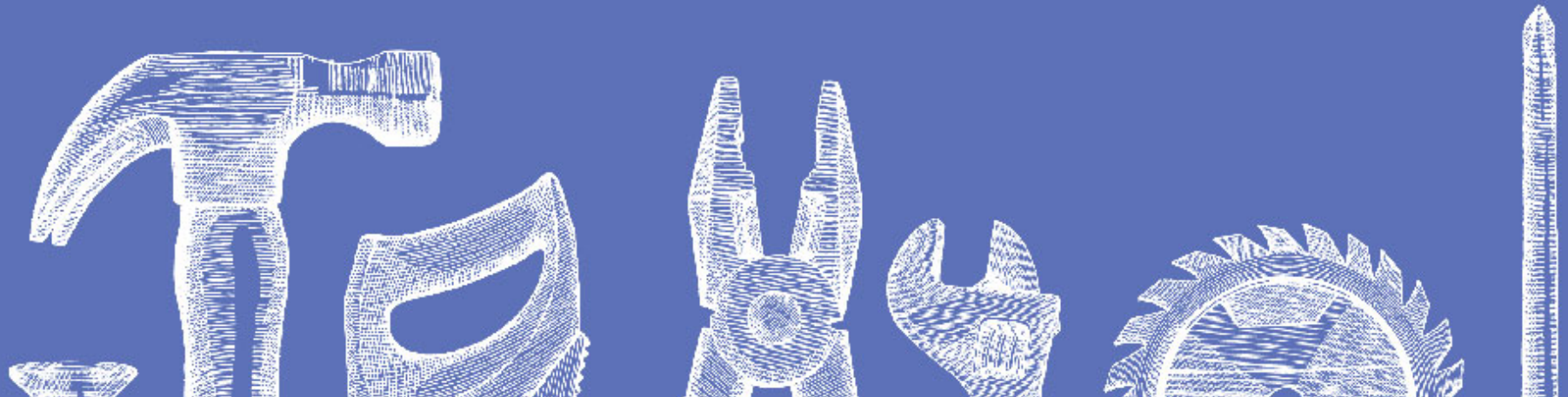
Presented by  
**TMRS Travel Team**



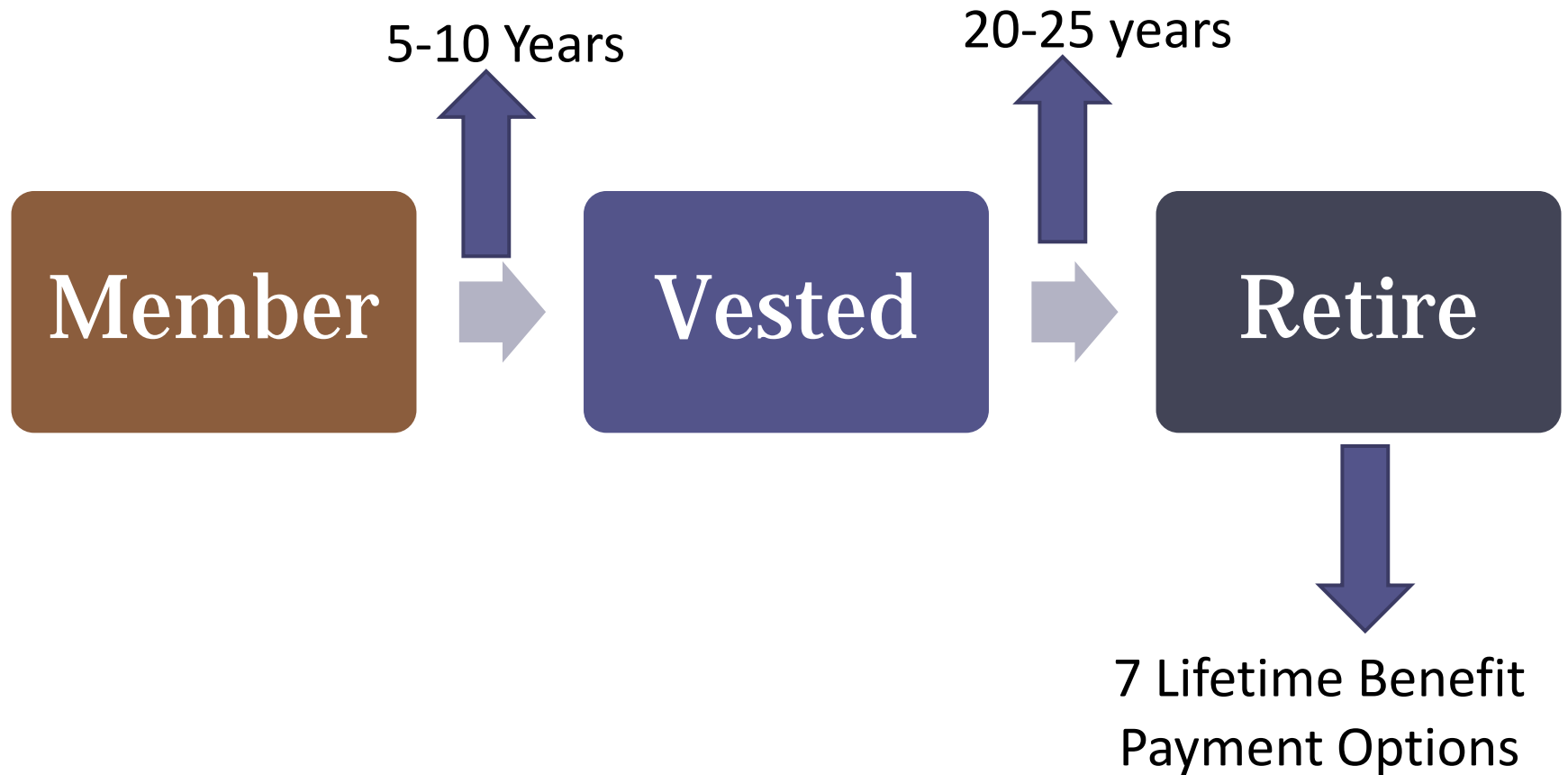
# The Whole Picture

- Review of TMRS Sessions
- TMRS Member Timelines
- Proportionate Retirement
- Lesser Known Topics
- Q&A, Discussion

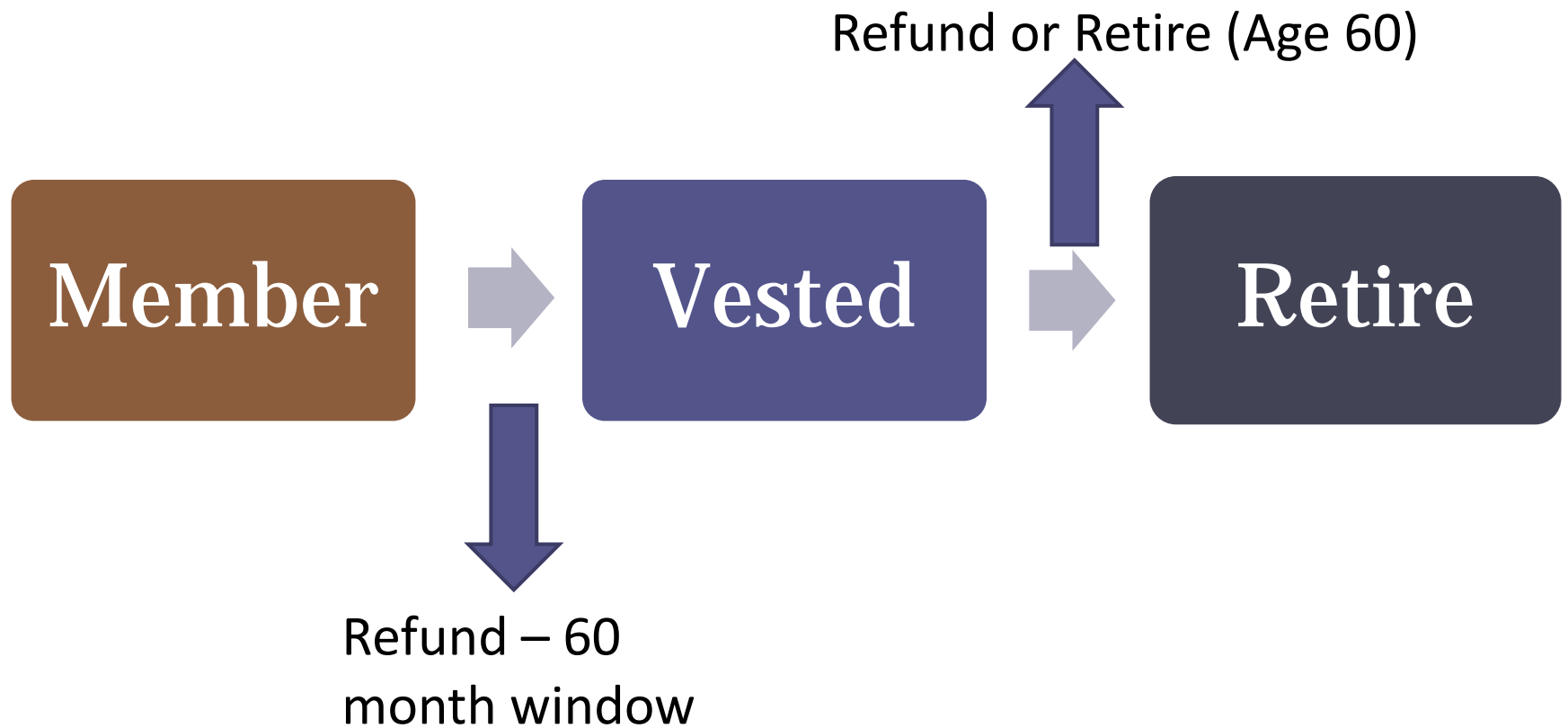
# Member Timeline



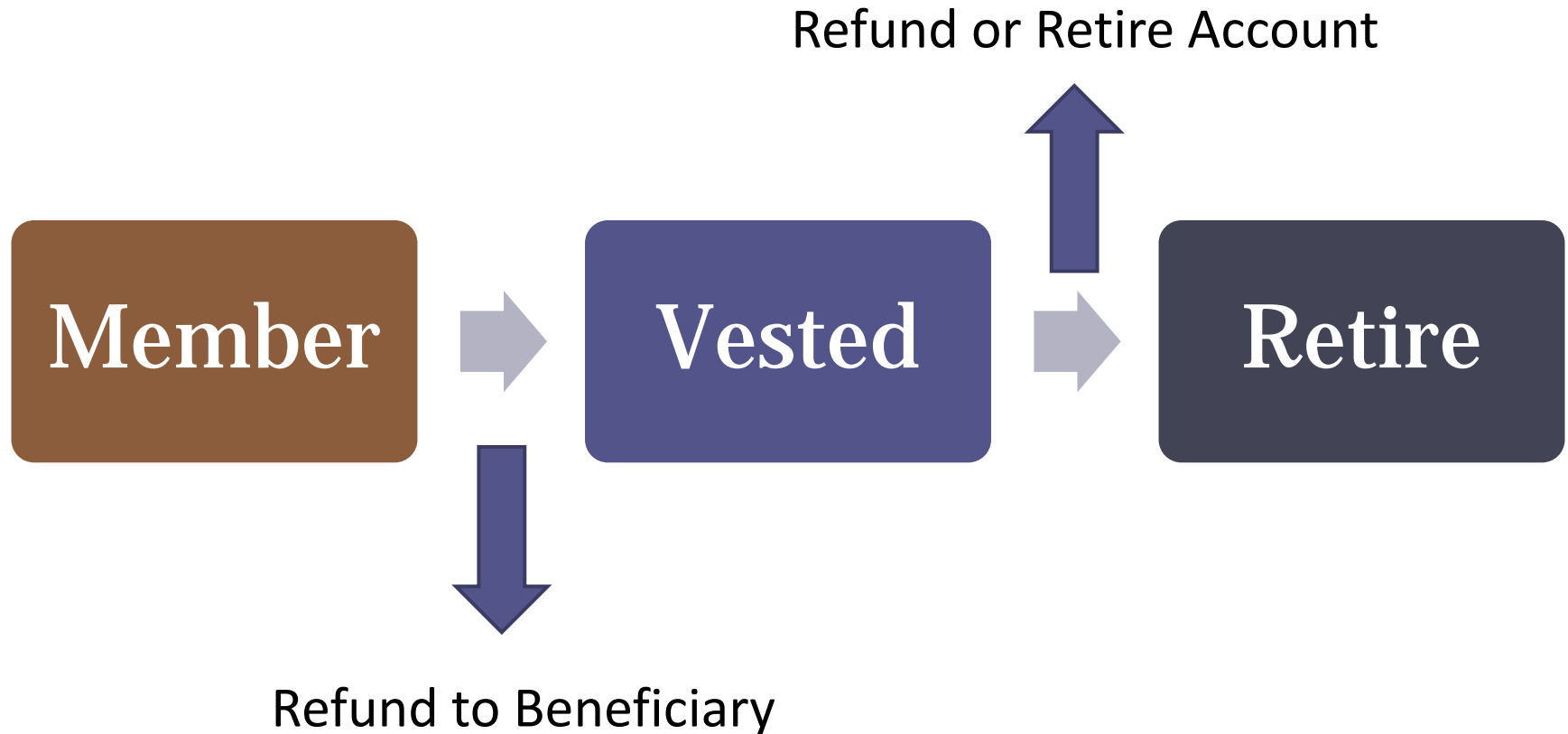
# Timeline of TMRS Career



# Employment Terminated

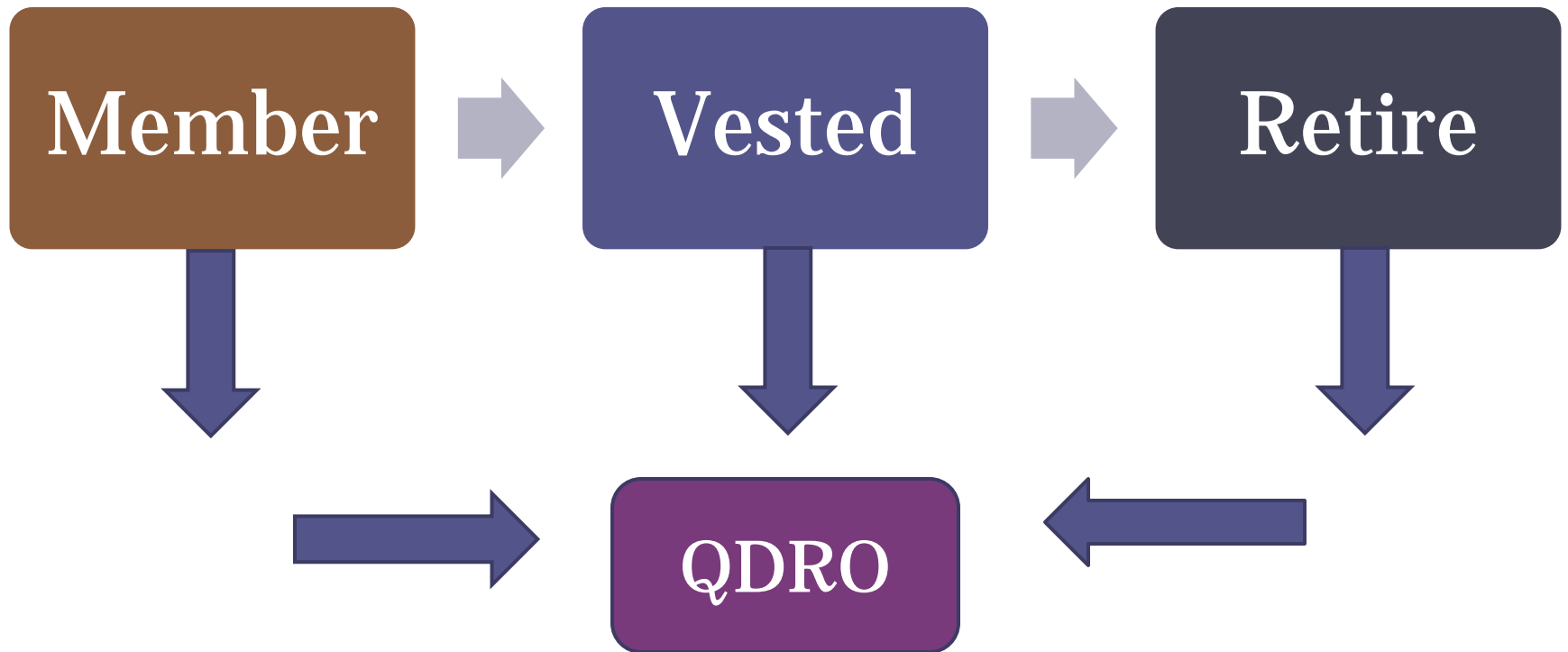


# Death of Member

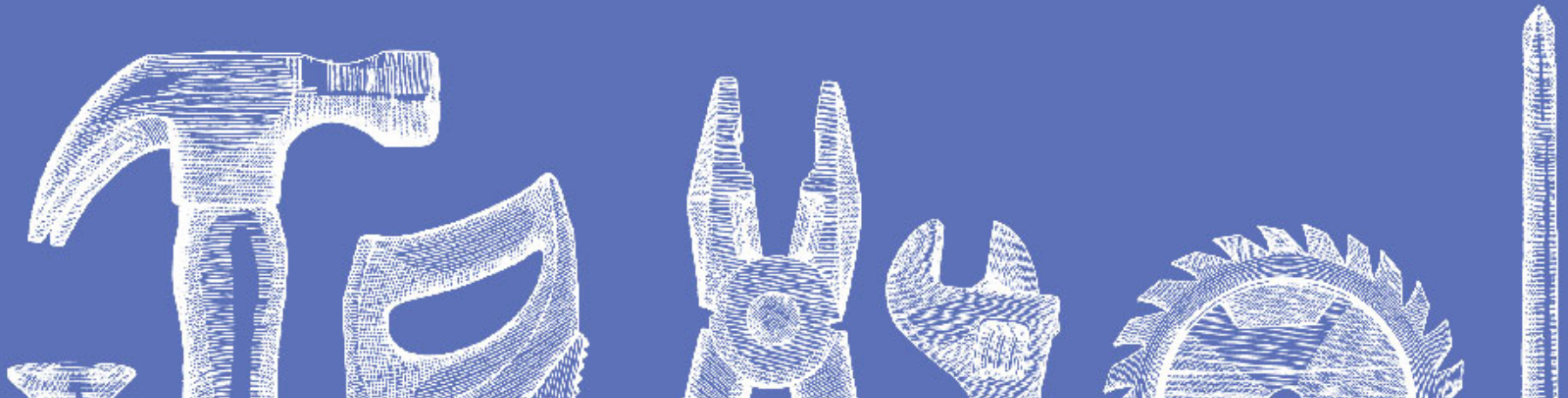


\*SDB (if applicable) is paid to beneficiary at death of member

# Divorce of Member

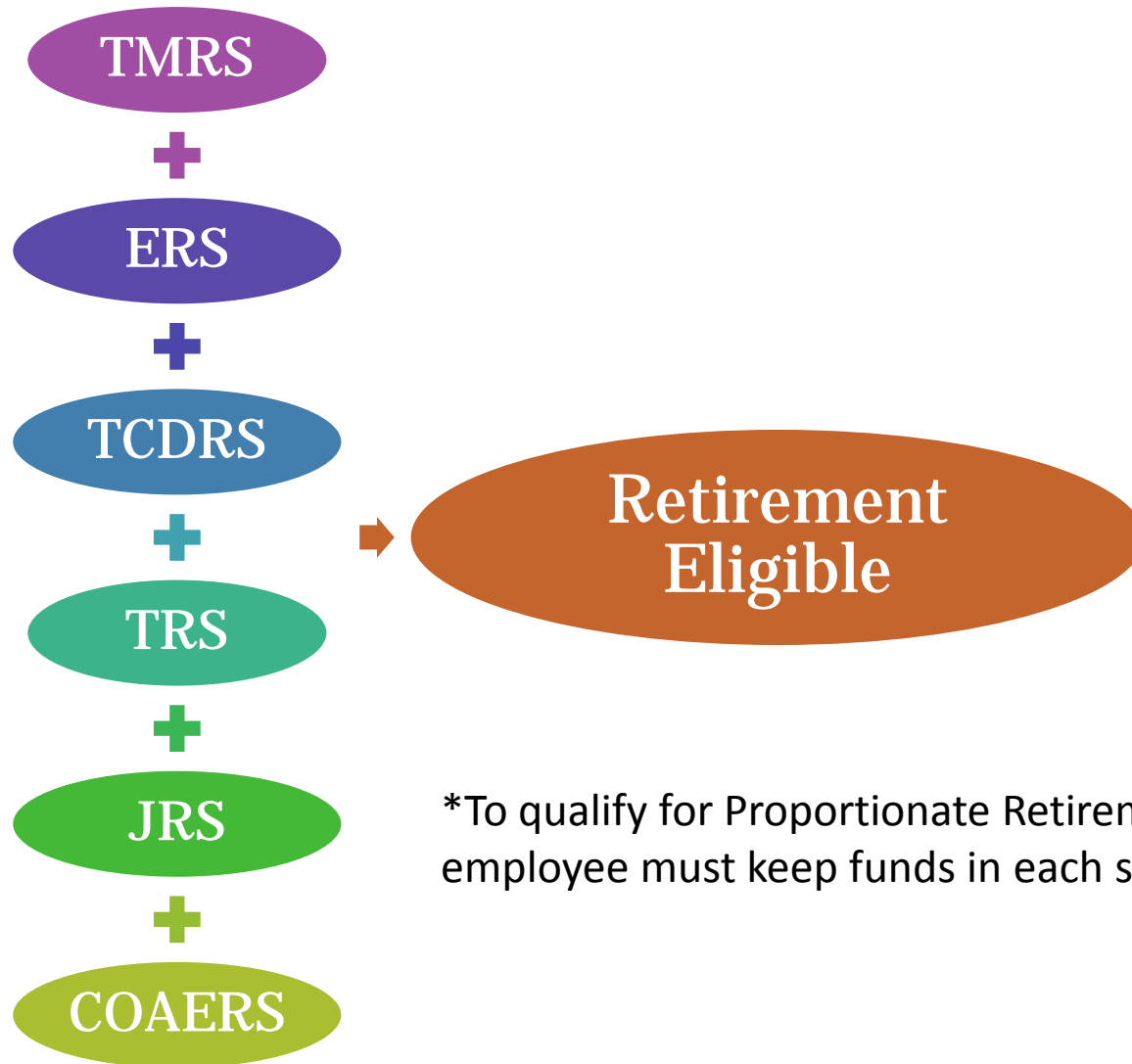


# Proportionate Retirement





# Proportionate Retirement Program



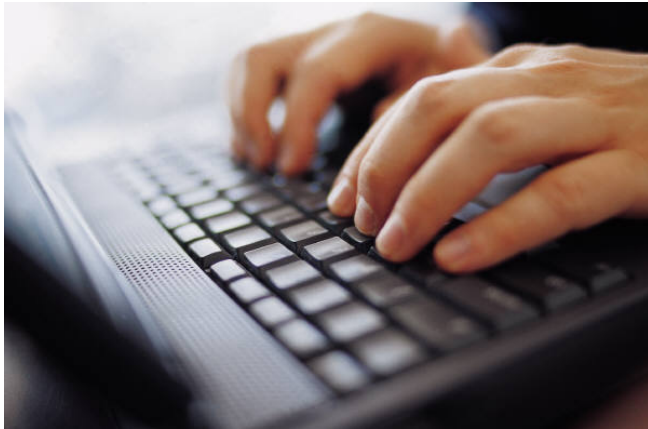
\*To qualify for Proportionate Retirement, employee must keep funds in each system.

# Lesser Known TMRS topics...

- City Portal
- Workers Compensation
- Occupational Disability
- Services

# What Is the City Portal?

## Online TMRS access for cities



- Access TMRS data for your city
- Access TMRS data for your city's employees
- Perform web-based administrative functions pertaining to TMRS

# What Can I Do on the Portal?

- Make inquiries on behalf of members
  - Account balances
  - Refund status
  - Payroll information
  - Generate retirement estimates
- Run city reports (e.g., vesting, retirement eligibility)
- Submit monthly payroll files



# Workers Compensation

- Subject to TMRS deduction
- Employee may pay deposit rate (5%, 6%, or 7%) of workers compensation earnings
- City will pay corresponding match



# Occupational Disability

- Return to work
  - Employee may return to work at same city without annuity being affected
  - Must be in a different position



# TMRS Services

- City visits
- Pre-Retirement Seminars
- City Correspondent Training
- Phone 800.924.8677
- MyTMRS and website
- Publications, e-bulletins

# Questions & Answers

